

# International **Student Guidebook**



Technical University of  
Civil Engineering Bucharest

## Table of Contents

<b>Romania</b>	<b>3</b>
.....	
<b>Introduction</b>	<b>3</b>
.....	
<b>History</b>	<b>3</b>
.....	
<b>Culture</b>	<b>5</b>
.....	
<b>Nature</b>	<b>7</b>
.....	
<b>Education system</b>	<b>9</b>
.....	
<b>Bucharest</b>	<b>11</b>
.....	
<b>Introduction</b>	<b>11</b>
.....	
<b>Culture</b>	<b>11</b>
.....	
<b>Parks</b>	<b>13</b>
.....	
<b>Religious centers</b>	<b>13</b>
.....	
<b>Embassies and consulates</b>	<b>14</b>
.....	
<b>Climate</b>	<b>14</b>
.....	
<b>How to reach Bucharest</b>	<b>14</b>
.....	
<b>How to reach UTCB</b>	<b>14</b>
.....	
<b>Academics and Registration</b>	<b>15</b>
.....	
<b>Education at UTCB</b>	<b>15</b>
.....	
<b>Bachelor degrees</b>	<b>16</b>
.....	
<b>Master degrees</b>	<b>17</b>
.....	
<b>Doctoral studies</b>	<b>17</b>
.....	
<b>Accreditations</b>	<b>19</b>

Affiliations/Memberships	19	Accommodation	28
Grading Scale and Credit System (ECTS)	19	The Orientation Week	28
Romanian language course	20	Romanian grading scale vs. ECTS grading scale	28
Categories of international students	20	Transcript of records	29
Tuition fees	20	Academic Calendar	30
Registration fee	21	National holidays in the academic year 2017-2018	31
Credit's value	21	Medical and Health Services	31
Fee for equivalence of previous undergraduate studies	21	UTCB health services	31
Rules, methods of payment and deadlines	22	Medical emergency	31
Admission and registration	22	Hospitals and drugstores	31
Language requirements	23	Housing and Accommodations	33
Student card	23	UTCB residential facilities	33
Immigration regulations	24	Living on Campus	35
EU students	24	Banks	36
Non-EU students	24	Post office	36
Working permit	26	Student Associations	36
Erasmus+ Mobility	27	Living off Campus	38
How to apply	27	Shopping	38
Deadlines of application	27	Mobile phone networks	39
Health insurance	27	Transport and travelling	39
Visa and residence permit	28	Leisure	41
		Safety & emergency	42

<b>Autentification</b>	43
.....	
<b>Maps</b>	44
.....	

## Romania

### Introduction

Located in south-eastern Europe, Romania has borders with Republic of Moldova, Ukraine, Bulgaria, Serbia, Hungary and the Black Sea.

A stable population of about 19 million inhabitants (48.7% men and 51.3% women) is spread over a territorial area of 237 500 km<sup>2</sup>, about half of them in urban areas. Romanians are the majority (88.6%), followed by Hungarians (6.5%), Roma (3.2%), Ukrainians, Germans, Turks, Russians, etc. The official language is Romanian, a Latin/Romanic language.

Romania, the eastern Latin country of Europe, with historical influences from the great empires, the most francophone country (except those where French is native), with its traditions and culture, with its impressive heritage and spectacular nature, welcomes you!

### History

In the Antiquity the current territory of Romania was inhabited by the Dacian civilization which confronted at the beginning of our era with the Roman Empire and was eventually conquered in the second century.

The "Dark Ages", so called by historians because of the lack of historical sources between the third and the thirteenth centuries, were marked by the Christianization and by the invasions and installation of the Slavs and Magyars among the proto-Romanians.

From the fourteenth century to the mid nineteenth century, the principalities of Moldavia and Wallachia were vassals of the Turks and obtained their independence in 1878. Transylvania was a principality vassal of Hungary, later of the Ottoman Empire and of the Austro-Hungarian Empire.

After the Crimean War, Romanian politicians decided, with the help of France, to found in 1859 "Little Romania" by the union between Moldavia and Wallachia. However, the new country was dependent of the Ottoman Empire. Prince Charles of Hohenzollern-Sigmaringen was called to reign Romania in 1866 and later became the first King of Romania, in 1881.

After the Russo-Turkish war, in 1878, Romania gains its full independence from the Ottoman Empire.

On the 1<sup>st</sup> of December 1918, Transylvania, Bukovina, Bessarabia (territories under the influence of the Austro-Hungarian Empire and Russia, populated by Romanians) proclaim their independence and their union with Romania, under King Ferdinand, who had fought alongside the Allies in the First World War. Due to this event, the 1<sup>st</sup> of December became nowadays the National Day of Romania.



During the Second World War, Romania was allied with Germany against Stalin who had occupied the eastern Moldova in 1940. However, in 1944, King Michael I declared war on Germany.

In 1945 the Communists came to power and imposed a totalitarian regime, which lasted until 1989, when the dictator Ceausescu was removed by the Romanian Revolution.

Romania became a NATO member in 2004 and joined the European Union in 2007.



## Culture

Romanians contributed to world's culture by a number of world-wide recognised personalities like: Constantin Brancusi, Eugene Ionesco, Brassai, Victor Brauner, Emil Cioran, Mircea Eliade, George Enescu, Sergiu Celibidache, Dinu Lipatti, Tristan Tzara.

Romania has many traditions, customs, traditional crafts and dances. The Doina and the CăluşRitual are listed on the UNESCO List of Intangible Cultural Heritage.

There are more than 30,000 historical monuments in the cultural heritage of Romania. Among these, the following are included in the UNESCO World Heritage List:

- Monastery of Horezu,
- Medieval fortified churches of Transylvania,
- Historic centre of Sighisoara,
- Painted Monasteries of Bucovina,
- Wooden Churches of Maramures,
- Dacian Fortresses of the Orastie Mountains.

Fortified churches are a unique phenomenon, specific for Transylvania. They are traces of the German population that settled there in the thirteenth and fourteenth centuries. There are 102 fortified churches in the Sibiu - Sebeş area, Braşov, Mediaş, Târnave, Agnita-Olt, Rupea and Bistriţa.

The most visited museums in Romania are the Peleş Castle (Sinaia), Bran Museum (Bran-Rucar), The Romanian Peasant Museum (Bucharest), the Village National Museum "Dimitrie Gusti" (Bucharest), The Brukenthal National Museum (Sibiu), The National Arts Museum of Romania (Bucharest), The National Museum of History (Bucharest) and The National Museum of Contemporary Art (Bucharest). Romania also has the second-largest outdoor museum in the world, the Astra Museum in Sibiu.

There are about 80 theatres in Romania. Various theatre festivals are annually organized, as the International Theatre Festival of Sibiu and the National Theatre Festival in Bucharest.

In addition, the major cities host 19 philharmonic orchestras and six operas (Bucharest, Cluj-Napoca, Iasi, Timisoara, Brasov and Constanta).

Every two years, the Festival and the International Music Competition "George Enescu" takes place in Bucharest. This event welcomes some of the greatest orchestras in the world.

Furthermore, Romanian films have enjoyed great success in recent years and have won prizes at international festivals.



Peleş Castle



Bran Castle



Moldovița Monastery

## Nature

Romania's terrain is distributed between hills, mountainous and lowland territories.

The Carpathians dominate the center of Romania, with 14 mountain ranges reaching above 2000 m, with the highest point the Moldoveanu Peak at 2544m. Here you can find the largest population of brown bears in Europe, with over 6,000 individuals.

The mountains are surrounded by the Moldavian and Transylvanian plateaus and the Pannonian and Wallachian plains.

Romania's border with Serbia and Bulgaria is bounded by the Danube River, which flows into the Black Sea within Romania's territory, forming the Danube Delta. The Danube Delta is part of the UNESCO World Heritage, the only one in the world declared as a Biosphere Reserve, with more than 5000 species of fauna and flora.

Romania has a climate that is transitional between temperate and continental, with four distinct seasons. The springs are pleasant with cool mornings and warm days and the summers are quite warm, with extended sunny days. The hottest areas in summer are the lowlands in southern and eastern Romania, especially in July and August.





Temperatures are always lower in the mountain areas.

During autumn the weather is generally dry and cool, with fields and trees giving rise to colourful foliage. Winters can be cold, especially in the highlands. While not a rule, abundant snowfalls may occur throughout the country, from December to mid-March. The extreme recorded temperatures were +44.5 °C in 1951 and -38.5 °C in 1942.

The 210 sunny days per year give you plenty of opportunities to enjoy outdoors activities.



## Education system

The Romanian education system is based on a tuition-free and egalitarian system. Access to free education is guaranteed by Article 32 of the Romanian Constitution. Education is regulated and enforced by the Ministry of National Education and Scientific Research.

School is compulsory until the tenth grade. It starts at the age of seven (after a mandatory "preparatory school year") with the elementary school that lasts eight years. At the end of the 8<sup>th</sup> year, a nation-wide high school admission test is held. Based on their results, students are distributed into high schools according to the expressed preferences. High school studies are devised into four year, two compulsory (9<sup>th</sup> and 10<sup>th</sup> year), two non-compulsory (11<sup>th</sup> and 12<sup>th</sup> year). Many high schools provide classes with intensive study of a foreign language, such as English, French, German, Italian or Spanish. In order to have access to higher education, students must take the National Baccalaureate Exam, comprising oral and written examinations.

University admissions are based on an "admission exam", organised by each University according to their policy and the current regulations. The higher education in Romania consists of public and private institutions and is organized in three cycles:

- Bachelor studies (undergraduate) with length depending on the specialty:
  - 6 semesters (3 years) for sciences, humanities, social and economic, law, political science, fine arts and sport;
  - 8 semesters (4 years) for technological sciences, engineering, agriculture and forestry;
  - 12 semesters (six years) for general medicine, dentistry, veterinary medicine and architecture.
- Master studies (postgraduate): 2 years.
- Doctoral studies (postgraduate): 3-4 years.

Higher education is aligned onto the European Higher Education Area.

Romanian education programmes organize specific activities of teaching, practical applications and exams according to the European Credit Transfer and Accumulation System (ECTS).

Romania is a great place for study. Diplomas are recognised all over Europe and beyond. In addition, the Diploma Supplement issued automatically with your graduation diploma is bilingual and thus ensures transparency of learning outcomes and improves employability. In addition, while maintaining its academic standards, Romania has some of the lowest tuition and living costs in the European Union.

**Ranked among the top 10 in the world, Romania has ultra-fast internet (60 Mbps in average) you can benefit from for studying, staying in contact with family or friends or simply enjoying music or playing online.**

**You will also be living and studying in one of the safest countries, with the crime rate among the lowest in Europe.**

## Bucharest

### Introduction

With a population of nearly 2 million inhabitants, Bucharest is the largest city and the capital of Romania. Being the cultural and economic centre of Romania, Bucharest is the country's most prosperous city and has a broad range of convention facilities, educational facilities, cultural venues, shopping arcades and recreational areas. The city of Bucharest was first attested in 1459 and became capital of Romania in 1862.

### Culture

Bucharest's cultural scene is diverse, with various fields of events.

The capital is home to the Romanian National Opera, as well as the I.L. Caragiale National Theatre. The smaller theatres throughout the city cater to specific genres, such as the Comedy Theatre, the Nottara Theatre, the Bulandra Theatre, the Odeon Theatre and the Constantin Tănase Revue Theatre.

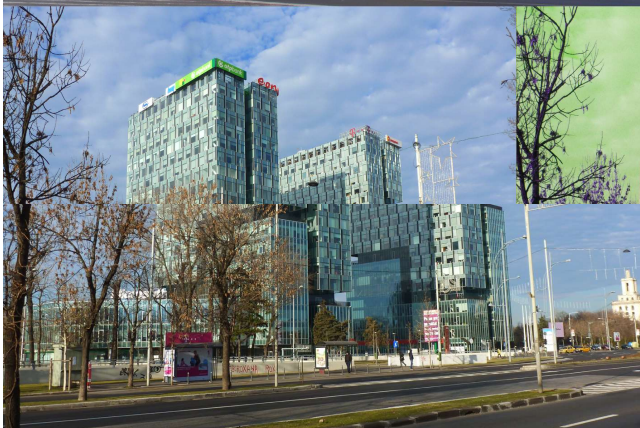
Cinemas show films from all over the world subtitled in Romanian.

The Romanian Athenaeum hosts classical music concerts, the George Enescu Festival and is home to the George Enescu Philharmonic.

Bucharest hosts more than 40 museums. Romania's National Art Museum and the National Museum of Contemporary Art are the biggest museums in Bucharest in terms of visual arts,







featuring both classical and contemporary Romanian as well as selected international works. Smaller museums contain more specialized collections of works: The Zambaccian Museum, the Gheorghe Tătărescu Museum, the Theodor Pallady Museum.

The Palace of Parliament, built in the 1980s during the reign of the communist dictator Nicolae Ceausescu, is the largest building in Europe and the second-largest in the world. It hosts the Chamber of Deputies and the Senate, but also the National Museum of Contemporary Art.

International culture is promoted through Foreign Cultural Centres as: American Cultural Centre, Austrian Cultural Forum, British Council, House of Latin America, Ceske Centrum, Hungarian Cultural Centre, European Cultural Centre, Friedrich Schiller Kulturhaus, Goethe Institut, Hellenic Union, Hungarian Cultural Centre, Institut Français, Instituto Cervantes, Instituto Italiano de Cultura, Polish Institute.

Cinemas, theatres, festivals and concerts are spread over downtown Bucharest and the city-mall areas. Students enjoy a number of discounts for attending cultural events or visiting museums and historical sites.

## Parks

Bucharest has numerous parks, some of which are the city's biggest attractions.

The Botanical Gardens, part of Bucharest University's Botanical Institute, extends over an area of more than 17 hectares and hosts more than 10,000 species of plants.

Herastrau Park is the largest park in the city. Centred on the lake, with which it shares its name, the park offers numerous attractions, including children playgrounds, an old fashioned fairground, an open-air theatre, gardens and promenades.

Carol Park offers a good view of central Bucharest and hosts the open-air theatre Arenele Romane, a popular venue for concerts.

Cismigiu Gardens, located in the city centre, include more than 30,000 trees and plants.



## Religious centres

Bucharest is home to the Romanian Orthodox Patriarchy and the Wallachian Metropolitan seat of the Roman Catholic Archbishopric and Apostolic Nunciature, of the Archbishopric and Eparchy Council of the local Armenian Apostolic Church, of the leadership of the Federation of the Jewish Communities of Romania as well as for other religions. Most of Romanians are orthodox (85% of the population). Except the orthodox churches, Bucharest hosts Catholic, Jewish and Islamic praying places.

## Embassies and consulates

Currently there are 84 diplomatic missions in Bucharest.

## Climate

Bucharest has a continental-type climate. Due to its position on the Romanian Plain, winters may have strong winds. Temperatures during winter often dip below 0°C, sometimes even dropping to -20 °C. In summer, the average temperature is around 23°C, but mid-summer heat waves can easily rise it up to 35°C or 40°C. Average precipitation and humidity during summer are low, however, summer-storms may occur. During spring and autumn, the average daytime temperatures vary between 17°C to 22°C, with quite frequent rain.

## How to reach Bucharest

Bucharest can be reached by plane (Henri Coandă International Airport), by train (North Railways Station), by bus (Eurolines and other bus companies) or by car.

## How to reach UTCB

The headquarters and the main campus of UTCB (the Tei Campus, located on 124 Lacul Tei Boulevard) can be reached by bus (numbers 182 and 282), tramway (numbers 16 and 36), or subway (getting off at stations "Stefan cel Mare" or "Obor", followed by a short walk). More information on the transportation system and the location of the stations nearby UTCB are given later in the guidebook.

Maps locating in Bucharest the 4 campuses belonging to UTCB are available at the end of this guide.

# Academics and Registration

## Education at UTCB

The Technical University of Civil Engineering Bucharest (UTCB) is one of the 57 state universities in Romania, under the purview of the Romanian Ministry of National Education and Scientific Research.

With its roots in the "School for Land Surveyors" and in "The School of Bridges, Roads and Mines" founded in 1818 and 1867 respectively, in Bucharest, UTCB was established in 1948. It is the only Romanian university entirely devoted to education in civil engineering and related fields, having a long history of successful contributions to Romania's development. With a competitive and well recognised academic staff, UTCB is a major actor not only in higher education related to the construction area, but also in research, consultancy, services, design codes and regulations. This, together with its international cooperation in the fields of education and research, make UTCB a top institution for higher education in civil engineering.

UTCB has seven faculties covering all specialties related to the construction industry. The Faculty of Engineering in Foreign Languages offers higher education in civil engineering entirely in English and in French at both undergraduate and Master level. The Faculty for Building Services Engineering also provides education both in Romanian and in French.

The following faculties are providing education in Romanian:

- Faculty of Civil, Industrial and Agricultural Buildings
- Faculty of Hydrotechnics
- Faculty of Railways, Roads and Bridges
- Faculty for Building Services Engineering
- Faculty of Technological Equipment
- Faculty of Geodesy.

All these six faculties which provide study programmes in Romanian can register international students who have completed a preparatory year dedicated to learning Romanian, in one of the 14 state universities accredited for this type of studies, or can provide another proof of Romanian language proficiency.

Higher education in other fields than civil engineering is provided by the Department of Foreign Languages and Communication and by the Department of Teacher Training.

## Bachelor degrees

A wide offer of 4-year undergraduate studies in English, French and Romanian is available at UTCB, their successful graduation leading to the Bachelor degree in engineering.

The Faculty of Engineering in Foreign Languages (FILS) provides undergraduate programs in Civil Engineering in both English and French. In the 2016 - 2017 academic year a total of 102 international students from 13 countries (Angola, Cameroun, Central Africa, Greece, Ivory Coast, Jordan, Iraq, Morocco, Nigeria, Palestine, Syria, Tunisia, Turkey) were registered at the Faculty of Engineering in Foreign Languages. Each year FILS also accommodates ERASMUS+ exchange students from different European Union countries, such as Spain, France, Portugal, Finland, Italy, Germany and Greece.

The Faculty of Building Services Engineering provides an undergraduate programme in Building Services in French.

All other undergraduate programmes are in Romanian language:

Faculty	Field	Undergraduate specialty
Faculty of Civil, Industrial and Agricultural Buildings	Civil engineering	Civil, industrial and agricultural buildings Urban engineering and regional development
	Engineering management	Construction management
Faculty of Hydrotechnics	Civil engineering	Hydraulic facilities and developments Sanitary engineering and environmental protection
		Environmental engineering
	System engineering	Automation and applied informatics
Faculty of Railways, Roads and Bridges	Civil engineering	Railways, roads and bridges Metropolitan transport infrastructure
Faculty of Building Services Engineering	Building services engineering	Building services Appliances and equipments for atmospheric protection
Faculty of Technological Equipment	Mechanical engineering	Construction machineries Management of technological resources
	Mechatronics and robotics	Mechatronics - robotics
Faculty of Geodesy	Geodetic engineering	Surveying and terrestrial measurements Land management and land register Geodesy and geoinformatics

The Department of Foreign Languages and Communication offers a 3 years undergraduate programme in Applied Modern Languages, specialized in translation and interpretation.

## Master degrees

The duration of master studies is of 2 years. UTCB provides 3 Master programme in English ("Structural Engineering", "Aquatic Environment Engineering and Science" and "Interactions in the built environment"), 2 Master programmes in French ("Structural Engineering" and "Energetic Efficiency of Building Services") and 25 Master programmes in Romanian language, covering 7 fields. The programmes in Romanian are open to international students if they certificate their linguistic competence.

The Department of Foreign Languages and Communication offers a 2 years Master programme in Applied Modern Languages, specialized in translation and interpretation.

Master degrees in Romanian:

Faculty of Civil, Industrial and Agricultural Buildings	Structural engineering
	Buildings' engineering
	Design of civil and industrial buildings in seismic regions
	Technology and management of construction works
Faculty of Hydrotechnics	Urban and regional development
	Management of design projects
	Hydraulic engineering
	Geotechnical engineering
Faculty of Railways, Roads and Bridges	Sustainable development
	Environmental protection
	Tunnels and bridges
Faculty for Building Services Engineering	Transport infrastructure engineering
	Sustainable transport infrastructures
	Energetic efficiency of building services
Faculty of Technological Equipment	Competitive technologies for urban environment protection
	Energy, comfort and sustainable development
	Machineries for construction dismantling and material recycling
Faculty of Geodesy	Advanced mechanical systems
	Information systems in land surveying and land register
	Analysis and processing of geospatial data
	Geomatics
Department for Teachers Training	Spatial planning and GIS for sustainable development
	Educational management
	Computer aided teaching technologies
	Management and educational counseling

## Doctoral studies

Furthermore, the university organizes doctoral programmes with duration of 3 years, in 6 fields of engineering. A doctoral programme includes the Advanced Academic Training Programme (2 semesters), and the Research Programme (4 semesters). The Research Programme is individually organized for each Ph.D. student.

Doctorate field	Specialization
Civil engineering and building services	Structural mechanics
	Earthquake engineering and safety of structures
	Urban engineering and regional development
	Reinforced concrete structures
	Steel structures
	Buildings
	Geotechnics and foundations
	Pathways of communication, bridges and tunnels
	Roads and airfields
	Railways
	Water supply and sewage systems
	Water treatment
	Waste water treatment
	Hydraulic structures
	Hydrology, hydrogeology and water management
	Environment protection in civil engineering
	Land reclamation
	Hydraulics and fluid mechanics
	Building services
	Indoor air quality
Acoustics of buildings	
Energetic efficiency of building services	
Geodetic engineering	Geodesy, photogrammetry, cartography and remote sensing
Mechanical engineering	Construction machines and equipments
	Technical mechanics and vibrations
	Thermotechnics
Electric engineering	Electrotechnics
Industrial engineering	Industrial technology
	Quality survey engineering
Engineering and management	Management in civil engineering
	Management of investment projects
	Economy and efficiency of investments

## Accreditations

Following the institutional evaluation performed by the Romanian Agency for Quality Assurance in Higher Education (ARACIS) – member of the European Association for Quality Assurance in Higher Education (ENQA), UTCB received a High Confidence Rating.

UTCB is eager to ensure a high quality of its activities, such that, on regular basis, the university is evaluated and certified within the ISO system. The International Certification Network IQNet and the Romanian Society for Quality Assurance SRAC certified that UTCB has implemented and maintains a Quality Management System which fulfils the requirements of the ISO 9001 standard.

## Affiliations/Partnerships

UTCB is an institutional member of several international and national associations and organisations:

- EUCEET** - European Civil Engineering Education and Training Association
- AUF** - Agence Universitaire de la Francophonie
- AESOP** - Association of European Schools of Planning
- FIB** - Fédération Internationale du Béton
- IPMA** - International Project Management Association
- PIANC** - Permanent International Association of Navigation Congresses
- IAESTE** - International Association for the Exchange of Students for Technical Experience
- ARACO** - Romanian Association of Construction Entrepreneurs
- APDP** - Roads and Bridges Romanian Professional Association
- CROMB** - Romanian National Committee for Large Dams
- ART** - Romanian Tunnels Association

## Grading Scale and Credit System (ECTS)

For grading, in Romania a 10-point scale is used, 5 being the minimum grade for passing. In few cases (like physical education, for example) the passed/failed result is used.

The European Credit Transfer and Accumulation System "ECTS makes teaching and learning in higher education more transparent across Europe and facilitates the

recognition of all studies. The system allows for the transfer of learning experiences between different institutions, greater student mobility and more flexible routes to gain degrees. It also aids curriculum design and quality assurance" (European Union).

UTCB uses a Credits Accumulation and Transfer System that follows the general lines of the European Credits Transfer System (ECTS). Each subject from the curricula has an assigned number of credits. The student is entitled to those credits if the subject is passed (with minimum mark 5 or with "pass" result). The total number of credits for the subjects in one year of study is 60. Rules for progression from one year to the next are set by university regulations. Thus, for the 4 years curricula, a total of 240 credits is required for graduation, along with the defence of the graduate diploma project. The UTCB internal regulations for the Credits Accumulation and Transfer System are also available in English and in French.

### Romanian language course

Starting with 2018-2019 academic year the Department of Foreign Languages and Communication organizes a Romanian language preparatory year attended by foreign students who will continue to study at UTCB or in other universities. ERASMUS+ exchange students also benefit from free Romanian language courses during the mobility period.

### Categories of international students

International students are categorised in several groups, according to the financing source of their studies and by the regulations and procedures they have to follow in order to register at UTCB:

- neighbouring countries students (Romania has specific programs and regulations for students from Republic of Moldova, as well as for Romanians - citizens of neighbouring countries (the information is constantly evolving and updated on the Ministry of National Education and Scientific Research and the Ministry of Administration and Interior websites);
- exchange students from partner institutions (special project regulations are applied for them);
- EU students – state grant-aided or self (privately) financed;
- privately financed students from third party countries; for this category, there are different regulations and procedures as for the citizens of the European Union, European Economic Area or citizens of the Swiss Confederation.

### Tuition fees

For undergraduate and master studies, for the 2018-2019 academic year, the study fee for international students was set as it follows:

A. For students citizens of a country from the European Union, European Economic Area or citizens of the Swiss Confederation

- 4500 Lei/year (~930 Euros) for the Faculty of Engineering in Foreign Languages,

and

- 4200 Lei/year (~865 Euros) for all the other faculties.

B. For students from other countries the study fee was 270 Euros/month, i.e. a total of 2430 Euros for 9 months (or 2700 Euros for 9 months plus one autumn re-examination period); the total fee includes the practical internship and the exams session; the fee does not include housing, meals or other expenses. The yearly fee covers a number of 60 credits.

For doctoral studies, for the academic year 2018-2019, the study fee for all international students was 2610 Euros/year for the full-time (intra-mural) programme and to 870 Euros/year for the part-time (extra-mural) programme. The fee for the public defence of the thesis is 540 Euros.

### Registration fee

In order to sign up for the 2020-2021 academic year at UTCB, a 120 lei fee was requested (~25 Euros).

### Credit's value

For the situations in which a student has to pay credits in order to retake an exam, for the academic year 2020-2021 the value of one credit was set at 75 lei (~16 Euros).

### Fee for equivalence of previous undergraduate studies

The fee to validate subjects from previous undergraduate studies (regardless of the number of credits that may be recognised and transferred), for the academic year 2020-2021 was set as it follows:

**A. For students citizens of a country from the European Union, European Economic Area or citizens of the Swiss Confederation - 500 lei (~110 Euros)**

**B. For students from other countries - 270 Euros.**

### Rules, methods of payment and deadlines

The fee is paid in Lei by the students being citizens of a country from European Union, European Economic Area or citizens of the Swiss Confederation, and in Euros by the other students. The study fee should be paid by bank transfer or in cash.

The payment must be done for the entire year in case of the students enrolling the first time at UTCB and who are not from the European Union, European Economic Area or Swiss Confederation. In all other cases the fee can be paid in three equal instalments.

Students who request the equivalence of subjects from previous undergraduate studies should pay the fee concurrently with the request. Students who ask for re-examination should pay the fee concurrently with the credits request, before the exam.

### Admission and registration

The registration procedure for international students requires the following documents:

- Request to issue a Letter of Acceptance to study, in duplicate;
- Study document - authenticated copy and translation - which qualifies the person for that form of education (high school diploma, Bachelor's degree, Master's degree or equivalent);
- Transcripts - copies - related studies and syllabus, for candidates applying for recognition of study periods;
- Copy of passport;
- Proof of payment of the application processing fee (100 Lei).

Students from non-EU countries also need

- Birth certificate - copy
- Medical certificate stating that the person to be enrolled for studies does not suffer from contagious diseases or other illnesses, incompatible with the future profession.

All documents written in languages other than English or French must be accompanied by original certified translations into Romanian.

### Language requirements

Students from non-EU wishing to study in Romanian language can registered at UTCB only after they complete a preparatory year, dedicated to studying Romanian. The candidates who speak Romanian can skip the preparatory year after having passed a Romanian language test. The candidates who can formally prove that they have studied in Romanian for at least 4 years consecutively in a high school (for undergraduate studies) or 3 years in a university (for postgraduate studies), do not need to pass the Romanian language test, nor to attend the preparatory year.

For enrolling the Faculty of Civil Engineering in Foreign Languages (FILS) or the French language programme in the Faculty of Building Services Engineering, a French or English language certificate is necessary; otherwise the candidate has to pass a language test.

### Student card

After filling-in the registration sheet and paying the registration and study fees, each new student enrolled at UTCB will receive a student card, with a one year long valid visa.

The student card with photo, signature and valid visa is the official document that certifies the status of each student; it is requested for admission at academic activities and exams. It also allows the holder to benefit from different discounts at museums, libraries, festivals, different services, etc.

In case of losing the student card, students should immediately contact the faculty secretary and follow the regulations.

Supplementary, students can apply for the International Student Identity Card.

# Immigration Regulations

## EU students

Students nationals of European Union, European Economic Area member state or Swiss Confederation who wish to stay for more than 3 months on the territory of Romania must access the web page of the General Inspectorate for Immigration at: <https://portagli.mai.gov.ro> and transmit the following documents:

- standard application;
- identity card or passport (original and copy);
- documents certifying that the person is enrolled in UTCB;
- proof of the means of subsistence;
- proof of health insurance;
- fees.

The registration certificate is issued on the same day.

## Non-EU students

In order to obtain the long term residence visa for studies, from the Romanian diplomatic missions and consular offices, non-EU students must first be accepted for enrolment at UTCB.

To obtain the long term residence visa, students must submit the following documents:

### I. For undergraduate, Master or PhD students:

- proof of acceptance for studies, issued by the Ministry of National Education and Scientific Research, attesting that they will attend full time education;
- proof of payment of the tuition fee for at least one year of study;
- proof of the means of subsistence, amounting to at least the minimum national net wage per month, for the entire duration mentioned in the visa;
- certificate of Criminal Record or other document having the same legal value;
- medical insurance during the validity period of the visa.

### II. For participants in a student exchange programme:

- proof of acceptance for studies, issued by the Ministry of National Education and Scientific Research, attesting that they will attend full time education;
- proof of participating in a student exchange programme, performed by an organization incorporated according to the law and recognized for this purpose;
- proof from the organization performing the student exchange, attesting that it insures them means of subsistence and the costs for their return;

- medical insurance during the validity period of the visa;
- proof of accommodation at a family selected by the organization performing the student exchange and which owns the dwelling space considered normal for a Romanian family.

The visa duty amounts to 120 Euros and will be paid in the State where the request is submitted.

The long-stay visa (marked D) allows the entry and stay on the territory of Romania for a period of 90 days at the most; however, this type of visa allows for its prolongation following an official request addressed to the Romanian Office for Immigration which is part of the Romanian Ministry of Administration and Interior. After entering Romania, the requests for the extension of the right of stay must be personally submitted by the applicants, at the local branch-offices of the Romanian Office for Immigration closest to their place of residence, at least 30 days before expiry of the stay right granted by the visa. Overstaying the visa entails cancellation of the visa and the obligation of leaving the territory of Romania.

In order to extend their residence right for studies, undergraduate, Master or PhD students must submit the following documents:

- application;
- document for crossing the border (Passport, travel document, etc.) in original and in copy;
- letter of acceptance for studies – to be requested only upon the first extension of the residence right;
- certificate issued by the higher education institution;
- proof of the means of subsistence amounting to at least the minimum national net wage per month, for the entire validity period of the residence permit;
- proof of the legal ownership over the dwelling space (in original and in copy);
- medical certificate;
- fees.

The citizens who receive scholarships from the Romanian State are exempted from the payment of consular duties for the residence permit and do not need to make the proof of their means of subsistence.

The proof of the means of subsistence should not be made by citizens of Romanian ethnos (i.e. if one of their ascendants held or holds Romanian citizenship).

Foreign citizens who turned 26 years old need a social health insurance for the extension of their temporary residence right, in accordance with Law no. 95/2006 concerning the health system reform.

International students who did not graduate during the initially granted period may benefit from the extension of their residence right over a maximum period of one year. The residence permit will be renewed with at least 30 days before the expiry of the previous one.

The temporary residence right for studies will be extended successively by 1 year periods. The residence permits for citizens receiving scholarships from the Romanian State will be granted over a period equal to the total duration of studies.

The residence right can be extended by at most 90 days after graduation, for the final settlement of the school or academic record and for the endorsement of the study documents.

### Working permit

Non-EU students, who study in Romania and hold a residence permit in this purpose, can be employed only part time (4 hours/day). For this, a work pass must be obtained.

## Erasmus+ Mobility

Erasmus ID code	RO BUCURES08
Erasmus Charter Number	53714-EPP-1-2014-1-RO-EPPKA3-ECHE
PIC	996793729
ERASMUS+INSTITUTIONAL COORDINATOR	Phd. Lecturer Andreea CONDURACHE
E-mail:	andreea.condurache@utcb.ro
ERASMUS+ OFFICE	<a href="http://erasmus.utcb.ro">http://erasmus.utcb.ro</a>
Postal address	124, LACUL TEI BLVD. 020396 BUCHAREST 2, RO
Phone/Fax	+40-21-2433630
Mobile	+40-744567747
E-mail	erasmusin@utcb.ro

### How to apply

If your application to study at UTCB is approved by your home university, you should fill in an Application Form and send it together with the preliminary Learning Agreement to: [erasmusin@utcb.ro](mailto:erasmusin@utcb.ro). This form can be downloaded from the web page <http://erasmus.utcb.ro/incoming>.

As soon as our university accepts your application and study programme, you will receive a letter of acceptance and an information package.

### Deadlines of application

In order to be accepted for studies and to benefit on our accommodation facilities, incoming students have to submit their application as follows:

- 30<sup>th</sup> of July for the 1<sup>st</sup> semester;
- 10<sup>th</sup> of February for the 2<sup>nd</sup> semester.

### Health insurance

It is strongly recommended that you get a health insurance to cover your study period in Romania. In the case of students from EU member states medical care is ensured on the basis of the European Health Insurance Card (EHIC). If you are a non-EU citizen, you should inquire whether there is a bilateral agreement on health care between Romania and your country.



## Visa and residence permit

Citizens of EU and EEA member states may travel to Romania without entry visa. However this regulation is applicable only for a period not exceeding 90 days. If your stay in Romania exceeds 3 months, you are required to apply for a residence permit.

## Accommodation of Erasmus+ students

To help us organize your accommodation, please complete the downloaded Accommodation Form (<http://erasmus.utcb.ro/incoming>) and return it to the Erasmus+ office at: [erasmusin@utcb.ro](mailto:erasmusin@utcb.ro).

## The Orientation Week

The programme „OrientActiv” for new students is dedicated to familiarize them with the university and its facilities. The programme lasts up to one week. You will be informed about the detailed programme via e-mail well in advance. Even if participation is not compulsory, you are strongly advised to attend. The „OrientActiv” will cover a variety of useful topics:

- Presentation of the University;
- Registration procedure, student cards;
- Information about courses;
- Romanian language courses, etc.

For the registration, all international students are required to bring the following documents:

- passport or identity card;
- 2 passport photos;
- copy of health insurance.

## Romanian grading scale vs. ECTS grading scale

ECTS grade	Romanian grade	Definition of scale interval
A	10	EXCELLENT
B	9	VERY GOOD
C	8 - 7	GOOD
D	6	SATISFACTORY
E	5	SUFFICIENT
FX	4	FAILED
F	1 - 3	FAILED

## Study programmes

The subjects' catalogue for study programmes in foreign languages is available at <http://fils.utcb.ro> or at <http://fii.utcb.ro>

## Transcript of records

All Erasmus students will be issued a Transcript of Records at the end of their studies at UTCB. Your transcript containing the appropriate credits and the grades awarded for each subject, will be sent to your home institution.

## Academic Calendar

In all faculties and for all education cycles, the activity starts on the first Monday of October and continues through the year until mid July with holiday breaks in December, February and April. Doctoral studies end according to the individual schedule of the public defence for each PhD student. Details of the academic schedule are given on the faculties' websites. The following table is an example of the academic calendar 2018-2019 for the Faculty of Engineering in Foreign Languages.

### Bachelor and Master degrees - First Semester

28.09.2020 – 15.01.2021	Academic activities
24.12.2020 – 03.01.2021	Holiday
07.01.2019 – 18.01.2019	Academic activities
18.01.2021 – 12.02.2021	Exam session
15.02.2021 – 19.02.2021	Holiday

### Bachelor and Master degrees - Second semester (except for the final year)

22.02.2021 – 28.05.2021	Academic activities
31.05.2021 – 25.06.2021	Exam session
28.06.2021 – 23.07.2021	Practical placement*
26.07.2021 – 20.08.2021	Holiday
28.06.2021 – 23.07.2021	Exam sessdion

\* Practical placement is organised as follows:

- 2 weeks - 1<sup>st</sup> year
- 3 weeks - 3<sup>rd</sup> year

## National holidays

Saint Andrew's Day	30 <sup>th</sup> of November
National Day	1 <sup>st</sup> of December
Christmas Days	25 <sup>th</sup> and 26 <sup>th</sup> of December
New Year Days	1 <sup>st</sup> and 2 <sup>nd</sup> of January
Unification Day	24 <sup>th</sup> of January
Easter Days	random
Labour Day	1 <sup>st</sup> of May
Whitsun Days	random
Assumption	15 <sup>th</sup> August

## Medical and Health Services

### UTCB health services

In UTCB *Tei* campus, the Student's medical assistance is located at the ground floor of the Residence no. 4. It provides basic consulting and treatment, and, if necessary, direct the student toward a specialised clinic or hospital (schedule 7:30-19:30).

### Medical emergency

In Romania, as well as in other countries of the European Union, 112 is the emergency call that can be dialled free of charge from any telephone or mobile phone, in order to reach emergency services, such as ambulances, fire & rescue services or the police.

There are also several other private ambulance services:

- SANADOR Ambulance: 021-9699
- SOS Ambulance: 021-9761
- BIOMEDICA Ambulance: 0722-338383.

### Hospitals and pharmacies

Bucharest has numerous public and private hospitals and a very large number of pharmacies. Below you can find is a list of some major hospitals and pharmacy networks present in Bucharest, with their contact information.

**Public hospitals**

<b>EMERGENCY HOSPITAL FLOREASCA (SPITALUL DE URGENTA "FLOREASCA")</b> 8 Calea Floreasca, sector 1, Bucharest 014461 Tel: 021-9621; 021-5992300; 021-5992308 E-mail: spital@urgentafloreasca.ro www.urgentafloreasca.ro	<b>NATIONAL INSTITUTE OF INFECTIOUS DISEASES "PROF. DR. MATEI BALȘ"</b> 1 Dr. Calistrat Grozovici St. Tel: 021-2010980 www.mateibals.ro/html/contact
---	---

**Private clinics**

<b>BIOMEDICA INTERNATIONAL</b> 111-113, Calea Floreasca Tel: 021-3117793 through 97 (Clinic) Tel: 0722-338383 (Ambulance, Medical Evacuations, Nursing) E-mail: office@bio-medica.ro www.bio-medica.ro	<b>BIO-DERM Dermatology Clinic</b> 42, Mihai Eminescu Str. Tel: 031-9101 / 021-2119674 Email: office@bioderm.ro www.bio-medica.ro
<b>EUROCLINIC</b> 14 A, Calea Floreasca Tel: 021-200-6800 E-mail: euroclinic@medisystem.ro www.spitaluleuroclinic.ro	<b>MEDLIFE Hyper Clinics and Hospitals</b> Tel: 021-9646 www.medlife.ro/contact/
<b>MEDICOVER Clinics</b> Tel: 021-9896 www.medicover.ro	<b>MEDSANA Clinic Cotroceni</b> 12, Nanu Muscel Str. Tel: 021-9607 Email: programari@medsana.ro www.medsana.ro
<b>REGINA MARIA Private Healthcare Network (Clinics and Hospital)</b> 14 A, Calea Floreasca Tel: 021-9268 www.reginamaria.ro	<b>SANADOR Medical Center</b> 26-28, Dr. Dimitrie Sergiu Str. Tel: 021-9699 www.sanador.ro/en/contact

**Ophthalmology only**

**OCULUS Clinic**  
 91-111 Calea Floreasca  
 Tel: 021-9268/021-3178070  
 www.eye.ro

**Dentistry only**

<b>GERMAN DENTIST CLINIC</b> 208, Calea Dorobantilor Tel: 021-231-8856 Emergencies: 0726-666-999 www.en.germandentist.ro	<b>ELITE DENT</b> Tel: 021-231-5737 www.elitedent.ro
--	--

**Pharmacy networks**

<b>SENSIBLU</b> www.sensiblu.com	<b>HELPNET</b> www.helpnet.ro
-------------------------------------	----------------------------------

## Housing and Accommodations

### UTCB residential facilities

UTCB students have the possibility to live in one of the 6 residence buildings (dormitories) placed in Tei campus. The international students, usually quartered in Residence no. 5, benefit from the same accommodation conditions as the Romanian students and they are hosted in the dormitories as indicated in the tables below.

The accommodation of students in UTCB dormitories is based on a renting contract. The renting of a place in a room is done for a single academic year, including all holidays except the summer holiday (for this period another contract can be signed, the price for a place in the room being different). The student shall pay the rent for one month plus a deposit (equivalent of a month's rental fee) which will be refunded at the end of the academic year. If, by any reason, the student moves out from the dormitory during the academic year, this deposit will not be returned.

The price of a place in the dormitories varies with the accommodation conditions. Furthermore, the University offers a discount from the actual rate, discount which is given upon payment of the following month during the last part of the current month. According to the country of origin and the type of financing (with scholarship or self-financed) the price of a place in the dormitory is as follows (academic year 2020-2021):

### Erasmus+ students

Hall No.	Places/room	Price/student	Discounted price/student	Facilities	Included	Additional costs
5	2	120 Euros	-	Rooms with shower and toilet. Each floor with a laundrette and kitchen.	Water, electricity and heating, laundry and kitchen.	-
	3	80 Euros	-			
7	3	50 Euros	-	Rooms with bathrooms and kitchens.	Water and heating.	Electricity bill

### Self-financing international students

Hall No.	Places/room	Price/student	Discounted price/student	Facilities	Included	Additional costs
5	2	120 Euros	-	Rooms with shower and toilet. Each floor with a laundrette and kitchen.	Water, electricity and heating, laundry and kitchen.	-
	3	80 Euros	-			
7	3	50 Euros	-	Rooms with bathrooms and kitchens.	Water and heating.	Electricity bill

The above prices do not include any other expenses like meals, etc.

Internet access is given to each student from UTCB residential halls based on an online-request; access is through cable and has a reasonable speed for all educational activities. The request is done at the start of every academic year by each student, and the request form is posted at <http://campus.utcb.ro/>. Requests from international students are processed with priority for ensuring an efficient communication with their universities, embassies, ministries, etc.

## Living on Campus

The Tei campus has a student's restaurant (cafeteria). The price of a meal is around 3 Euros and is not included in the price of the halls. The cafeteria has a capacity of 1500 people/day and is opened from Monday to Friday from 12:30 to 16:00 and from 17:30 to 21:00.

A number of faculties which are part of UTCB are found in the Tei campus. Each faculty offers students the adequate space for carrying out the educational process (lecture and tutorial rooms, research laboratories, computer networks etc.). In addition, each faculty is equipped with a library, where students can borrow books, lecture or laboratory notes, necessary for the educational process. The access to these libraries is free and is done according to the faculty to which the student belongs to as follows:

- Students enrolled at the Faculty of Civil, Industrial and Agricultural Buildings and the Faculty of Civil Engineering in Foreign Languages have access to the library inside the building at the basement level.
- Students enrolled at the Faculty of Hydrotechnics have access to the library located at the third floor.
- Students enrolled at the Faculty of Railways, Roads and Bridges have access to the Resources Centre found at the ground floor of their own building.
- Students enrolled at the Faculty of Geodesy have access to the library located behind the Faculty of Civil, Industrial and Agricultural Building
- Students enrolled at the Faculty of Building Services Engineering have access to library in the basement of the building (Pache Protopopescu campus).
- Students enrolled at the Faculty of Technological Equipment have access to the library located in building P (Plevnei campus).
- Students enrolled at the Department of Foreign Languages and Communication have access to the department's library located at the third floor in the Administrative Building.

When registering to a library, the students will receive a library access card, handed at each branch, based on the following documents: student card validated up to date, original identity document, one photo (2x3). For more information visit the library's website.

In the Tei campus one can also find the UTCB Gym, located in the park across the street from the faculties' complex, where students have free access during the Physical Education and Sport classes. Out of hours, the access in the Gym building is based on an entrance fee.

Around the Tei campus, there are several supermarket stores, such as ISSA - with non-stop service, and MEGA IMAGE, but also a commercial centre called "Domino

**Plaza”, where various stores operate, such as food stores, clothes stores, household stores, pharmacies, exchange bureaus, etc. The centre is located right at the junction between Lacul Tei Boulevard and Maica Domnului Street and it is open daily between 08:00 and 22:00.**

### Banks

**Around the Tei campus, students have access to a wide range of national and international bank offices. Right inside the Faculty of Hydrotechnics building there is an office of BRD, member of “Groupe Société Générale” opened from Monday to Friday between 09:00 and 17:00. At this branch students can obtain the international card ISIC, with which they can benefit from discounts and facilities in various shops around the world and have access to fast services of national and international money transfer – Western Union, ATM and exchange.**

**Around the junction between Lacul Tei boulevard and Maica Domnului street, students can also find other banks such as BancPost, ING, BCR, Banca Transilvania and Banca Romaneasca, where they have access to various money transfer services, ATM and exchange. The banks operate between 8.30 – 17.30 from Monday to Friday and between 8.30 – 12.30 on Saturdays (BCR and Banca Transilvania only).**

### Post office

**Just near Tei campus, on 19 Teiul Doamnei street, there is the Postal Office number 38, which operates between 07:30–13:00 and 13:30–20:00 from Monday to Friday and between 08:00–14:00 on Saturdays. Here students can send/receive documents/letters/national and international packages and benefit from money transfer services.**

### Student Associations

**Student associations are encouraged in UTCB and are seen as an important partner for the education process.**

**The UTCB Students’ Association (ASCB) has its headquarters in the student’s cafeteria building. It is a young organization representing the civil engineering students that seeks, through the projects carried out, to win the students’ trust, involvement and friendship. From hosting charities to organizing parties, ASCB tries to make studentship one of the most pleasant experiences and to make international students feel as if they are part of one big family, based on true friendship.**

**The Association of Francophone Students – UTCB was created in 1990 and its goal is to promote cultural activities and cooperation, not only with the francophone countries, but in a multi-linguistic and multi-cultural approach. Since the early ‘90s it became member of Association Francophone d’Amitie et de Liaison (AFAL - Paris) that regroups all important governmental and non-governmental francophone organisations. It has its own library and is a natural and constant partner of the Department Of Foreign Languages and Communication for cultural activities.**

**A professional association active in the university is the UTCB student branch of the American Society of Heating, Refrigerating and Air-Conditioning Engineers (ASHRAE), Danube Chapter.**

## Living off Campus

For students not willing to live on campus they have the possibility to rent an apartment. In the Tei area the rental fee vary according to the desired type of property. For example, for a studio apartment the monthly prices vary between 200 and 300 Euros, for a double bedroom apartment between 350 and 400 Euros and for a triple bedroom apartment between 400 and 550 Euros. However the prices can be negotiated. The properties can be rented through real estate agents, which for a fee will show you the property and will make a contract between the landlord and the tenant. Commissions for agents vary between 30% and 50% from the value of the monthly rent. As guarantee, the landlord might usually require the down payment of the rent for two or three months, depending on the property type. In case of damages or default, the landlord has the legal right to sanction the tenant by suing and requiring damage/recovery payment.

Usually, aside from paying the rent, the tenant has to pay utilities such as: gas, electricity, water, sanitation, maintenance, internet, cable, landline service; expenses which can vary from 30 to 150 Euros in the winter months when the gas/maintenance bill increases considerably. As for the landline, internet and cable, the tenant is usually the one to sign a contract with a company which provides these services. The cost for cable television – basic package – which offers 62 channels is around 6Euros/month, but can vary according to the number of desired channels. As for the landline, the cost of a monthly subscription is between 3 and 5 Euros, with possibility to speak internationally on landlines for a supplementary cost of 0.05 Euros/minute. The internet is paid according to the desired bandwidth, subscriptions beginning with prices of 7 Euros/month.

Private student residence halls are also available in Bucharest. Offers and accommodation conditions can be found on the following web sites:

### ARCCA STUDENT HOUSING

[www.arcca.ro/en/home/](http://www.arcca.ro/en/home/)

Campus Vitan Village, Bd. Energeticienilor, nr. 9-11, Sector 3, București

Campus Pajura Garden, Str. Pajurei, nr. 12, Sector 1, București

### WEST GATE STUDIOS,

[www.metropotam.ro/locuri-locatii-adrese/West-Gate-Studios](http://www.metropotam.ro/locuri-locatii-adrese/West-Gate-Studios)

Bd. Preciziei, nr. 24, sector 6, București

## Shopping

Bucharest's main shopping areas are the shopping centres and malls. Here, the opening hours are between 10.00 – 22.00 every day, from Monday to Sunday, even during national holidays. Smaller shops are open usually from Monday to Friday

10.00 – 20.00 and on Saturday 10.00–14.00. Grocery stores are open also on Sundays.

For payments in cash only the Romanian currency – Lei – is legally accepted.

Mega Mall	Bd. Pierre de Coubertin nr. 3-5	<a href="http://www.megamallbucuresti.ro">www.megamallbucuresti.ro</a>
Grand Arena Mall	Bd. Metalurgiei nr. 12-18	<a href="http://www.grandarena.ro">www.grandarena.ro</a>
AFI Palace Cotroceni	Bd.Vasile Milea nr. 4	<a href="http://www.aficotroceni.ro">www.aficotroceni.ro</a>
Sun Plaza	Calea Văcărești nr. 391	<a href="http://www.sunplaza.ro">www.sunplaza.ro</a>
Băneasa Shopping City	Str.C.A. Rosetti nr. 5	<a href="http://www.baneasa.ro">www.baneasa.ro</a>
București Mall	Calea Vitan nr. 55-59	<a href="http://www.bucurestimall.com.ro">www.bucurestimall.com.ro</a>
Plaza România	Bd.Timisoara nr. 26Z	<a href="http://www.plazaromania.ro">www.plazaromania.ro</a>
Unirea Shopping Center	Piata Unirii nr. 1	<a href="http://www.unireashop.ro">www.unireashop.ro</a>

## Mobile phone networks

There are three major mobile phone companies in Romania - Orange, Vodafone and Telekom. The monthly price of a contract begins from 5 Euros and can reach up to 20 Euros, depending on required options. Usually students are recommended to use Prepay cards, with possibility to top-up sums starting from 3 Euros and which offer add-on options with thousands of minutes and SMS in national and international networks. To call from abroad to Romania, one needs to use the prefix "0040" or "+40" and then to dial the number, regardless whether it is a mobile or landline number. For landline, in Romania, the county prefixes can be found online. For calling from Romania abroad the required number is dialled, preceded by the prefix of the called country.

## Transport and travelling

The public transportation network in Bucharest is made of the Autonomous Company of Transport (RATB) – busses and tramways - and Metrorex – the subway company. In regard to RATB, the Tei area is serviced by tramways 16 (Downtown – Pipera) and 36 (Pantelimon – Pipera) and buses 182 and 282 (North Railway Station – Colentina), as well as the night bus – N123 (Unirii – Lacul Tei). A trip with any of these vehicles costs ≈ 0.40 Euros and a monthly pass on any line is ≈ 15 Euros. RATB also covers express routes to International Airport "Henri Coanda" Otopeni, where the fare for one trip is 1 Euro.

For Metrorex, the fare for a two-trip card is almost 1.5 Euros. The closest tube stations to the Tei area are "Stefan cel Mare" and "Obor". Travel cards can be purchased inside the subway stations and can be used for one month from the first validation. In order to issue a monthly discounted travel pass (50%, ≈ 10 Euros) the student ID card and the identity card or passport are required.

Travelling by taxi is cheap compared with other countries, for prices between 0.5 and 1.2 Euros/km. It is recommended to use only official taxi companies and to ask for the receipt. Cell phone apps are available for ordering taxis.

To drive a car in Romania a valid driving license is required, all issued in the EU being recognized, as well as many others. International driver licences are valid in Romania, regardless of the owner's country of origin. Gasoline is quite expensive (1.4 Euros/l) and the car insurance (the green card) is compulsory.

For travelling outside the urban area, railway and bus companies are available. Students get a 50% discount to travel by train. A travel coupons booklet for 24 journeys is provided by the Secretariat of Faculty the student is registered. To purchase a discounted ticket, students need the student ID card, the personal ID card and the coupons booklet. Bucharest-North railway station, accessible by subway, provides connections to the most important Romanian cities and regions.

The main bus stations where students can take a bus to travel in Romania or abroad are:

- Autogara Obor - B-dul Garii Obor nr.5A, sector 2
- Autogara Militari - Str. Valea Cascadelor nr.1, sector 6
- Autogara Filaret - Piata Garii Filaret nr.1, Sector 4

Home of seven UNESCO world heritage sites, Romania is a country of many facets. Students have the opportunity to travel to Transylvania and visit the Bran Castle in the middle of the country, as well as the fortified city of Sighişoara. Or, they can choose the seaside, with its wide fine sand beaches and modern clubbing resorts, the Danube Delta, the Carpathian mountains with their very good hiking paths and skiing resorts or the painted monasteries of Bucovina. Obviously, there are enough reasons for taking advantage of week-ends and vacations to travel and spend your time outdoors.

## Leisure

For leisure, there are two parks near the university's campus – Tei Park and Circus Park – where in their free time, students can rent a boat or a paddle boat (in Tei Park), or can admire the water lilies in the Circus Park. Both parks have areas for relaxation, walking, fun and sports. In Bucharest, there are many other parks, where students can rent a bike for free, only based on their identity card. Furthermore, there is also a sports' centre next to the lake where students can practise various sports (football, volleyball, basket-ball, tennis).

Bucharest is a place where students can find a large variety of bars, pubs and clubs, the nightlife and its diversity being great tourist attractions. The "heart" of fun in Bucharest is the Old Centre area, which offers entertainment to fit anyone's preferences. Every Friday and Saturday one can choose from tens of partying establishments, all crammed up on the narrow streets. Some clubs and pubs ask for a small fee at the entrance. However, the prices are not high in the old city centre (the entrance fee is under an equivalent of 5 Euros) while drinks are also not expensive (a beer is between 2 to 3 Euros, a cocktail between 4 to 5 Euros).





The old town centre is the safest zone to be at night, streets being crowded late after midnight. Nevertheless, for the first time, it is recommended to be accompanied by colleagues already knowing the location.

As for moving-picture theatres, the most important ones are usually located inside the city-malls areas. Addresses and

phone numbers are listed below:

Cinema City Cotroceni	Bd. Vasile Milea nr. 4	tel. 0214070000
Cinema City Sun Plaza	Calea Văcărești nr. 391	tel. 0213860600
Cinema City Mega Mall	Pierre de Coubertin nr. 3-5	tel. 0372839066
Movieplex Cinema	Bd. Timișoara, nr. 26	tel. 0214310000
Cinema City București Park Lake	Str. Liviu Rebreanu nr. 4	tel. 0731333663
Grand Cinema & More	Șos. București-Ploiești nr. 42D	tel. 0742654321
Hollywood Multiplex	Calea Vitan n. 55-59	tel. 0213277020
Cinema Elvira Popescu	Bd. Dacia nr. 77	tel. 0374125216
Cinema Muzeul Țăranului	Str. Monetăriei nr. 3	tel. 0213179661
Cinema Pro	Str. Ion Ghica nr. 3	tel. 0318241360
Cinema Studio	Bd. Gheorghe Magheru nr. 29	tel. 0213165526
Cinema Eforie	Str. Eforie nr. 2	tel. 0213130483
Glendale Studio	Șos. Cotroceni nr. 9	tel. 0213163286

- *Picuters in this chapter by courtesy of Andrei Bartesch*

### Safety & emergency

Bucharest is quite a safe city. "In comparison with many other major cities in Europe, violent crime and serious risks are low" (Tripadvisor).

However, like in every big city, pick pocketing is one of the most common dangers for foreigners. In some areas stray-dogs may pose a threat to people walking or cycling.

The safety of citizens found on Romanian territory is ensured by the Romanian Police and the National Service of Gendarmerie.

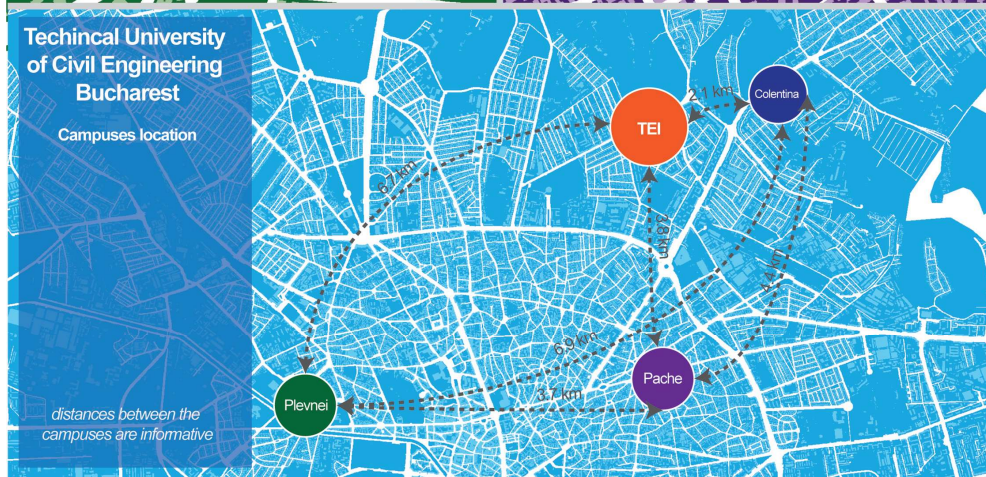
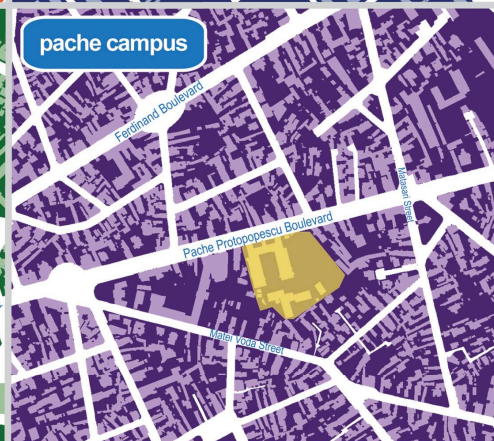
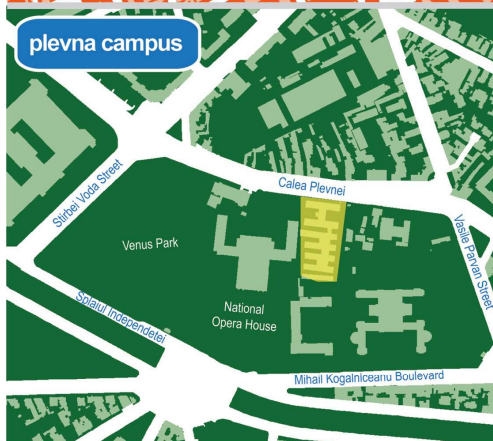
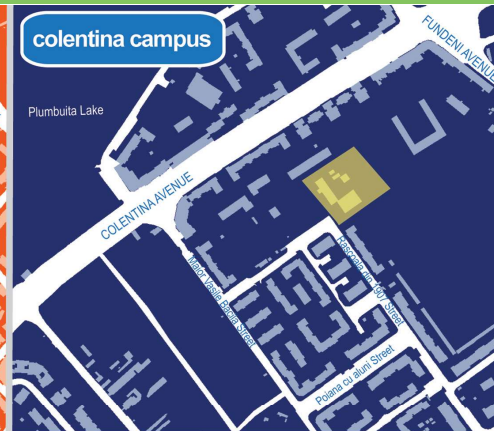
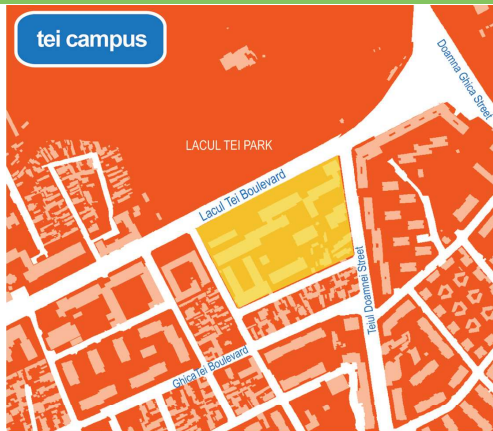
In case of an emergency, all citizens found on Romanian territory are asked to call the unique emergency number 112, where an operator will take their call regardless of whether they need police, fire brigade, ambulance, etc.

### Identification

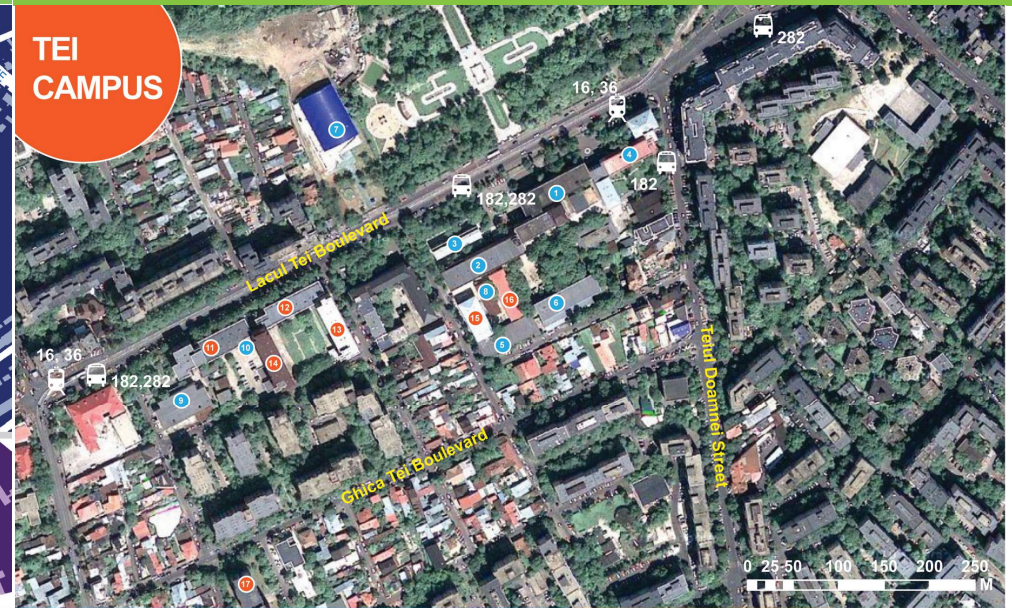
When requested by legally entitled persons, always in uniform, the student should present his residence permit and/or the passport or national ID, together with the student card.







Cartography - Groundwater Engineering Research Center - <http://coias.utcb.ro>



- ① UTCB Rectorate, Civil Engineering Faculty
  - ② Faculty of Hydraulics
  - ③ Faculty of Civil Engineering in Foreign Languages
  - ④ Faculty of Geodesy, Faculty of Railways, Roads and Bridges
  - ⑤ Department of Hydraulics and Environmental Protection
  - ⑥ Administrative building, taxes
  - ⑦ UTCB Gym
  - ⑧ Police station
  - ⑨ Student Cafeteria
  - ⑩ Medical Center
  - ⑪ Student House 1
  - ⑫ Student House 2
  - ⑬ Student House 3
  - ⑭ Student House 4
  - ⑮ Student House 5
  - ⑯ Student House 6
  - ⑰ Student House 7
- Trams no 16, 36  
Buses no 182, 282



**City center**

**"Nord" Railway Station**

**HOW TO GET TO TEI CAMPUS ?**

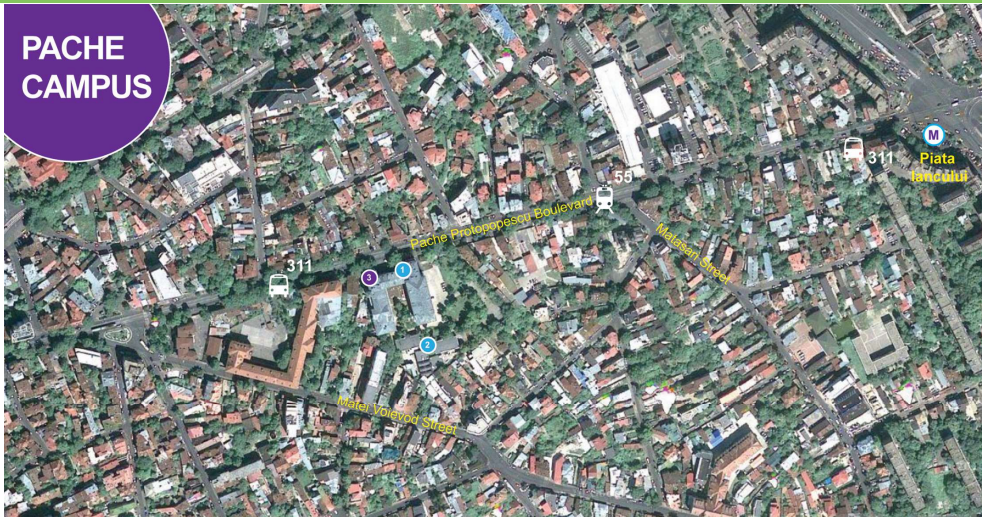
- From the city center you can take the tram no. 16. The tram station is located between Unirii Square and Universitate Square. Also the tram station is located exactly at km 0 of Bucharest. You can reach the Unirii Square or Universitate Square by Metro.
- From the central railway station -called Nord Railway Station- you can take the bus no. 282. You can reach the railway station by Metro.



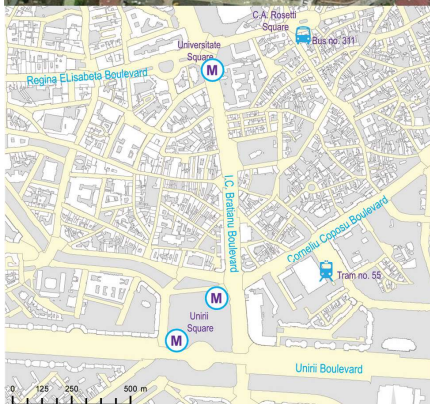
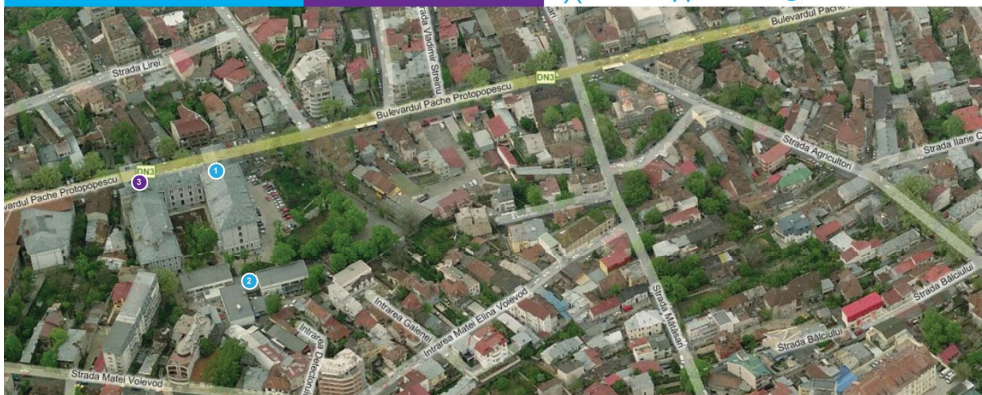
Cartography - Groundwater Engineering Research Center - <http://coias.utcb.ro>



## PACHE CAMPUS



1 Faculty of building services 2 Laboratories 3 Ballroom - Faculty of building services  
 Tram no 55 Bus no 311 Metro station Piata lancaului



### HOW TO GET TO CAMPUS PACHE ?

You can get to Campus Pache using the following means of transport:  
 Bus no. 311 from C.A. Rosetti station - near Universitate Square.  
 Tram no. 55 from Stanta Vinerei Station - near Unirii Square.  
 Using the Metro system.



Cartography - Groundwater Engineering Research Center - <http://gcias.utcb.ro>

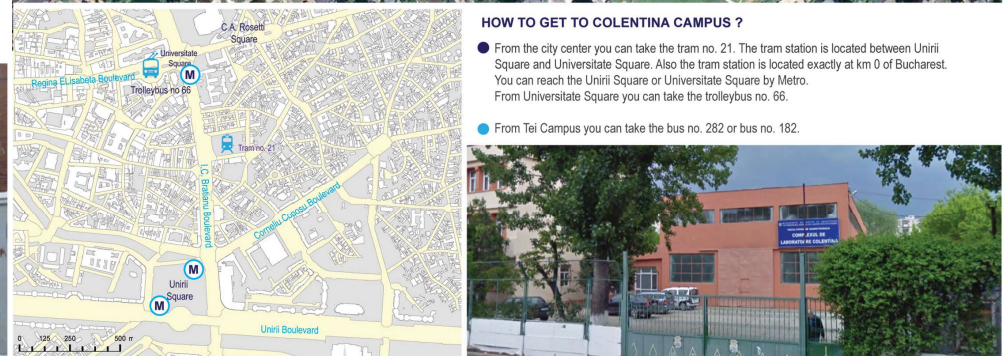
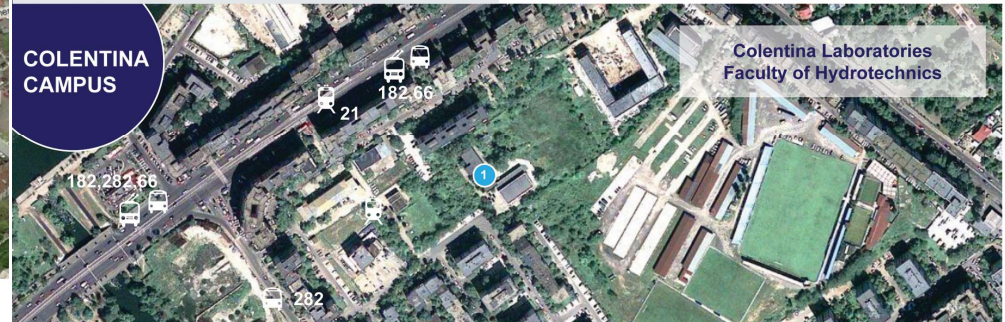


## PLEVNEI CAMPUS



1 Faculty of technological equipment 2 Student Cultural House 3 Opera House  
 Trolleybus station Tram station  
 Bus station Metro station

**HOW TO GET TO PLEVNEI CAMPUS ?**  
 Plevnei Campus is situated in the center zone of Bucharest with many transport connection. The easiest way is to use the Metro system - Eroilor Station.



### HOW TO GET TO COLENTINA CAMPUS ?

- From the city center you can take the tram no. 21. The tram station is located between Unirii Square and Universitate Square. Also the tram station is located exactly at km 0 of Bucharest. You can reach the Unirii Square or Universitate Square by Metro. From Universitate Square you can take the trolleybus no. 66.
- From Tei Campus you can take the bus no. 282 or bus no. 182.



Cartography - Groundwater Engineering Research Center - <http://gcias.utcb.ro>

